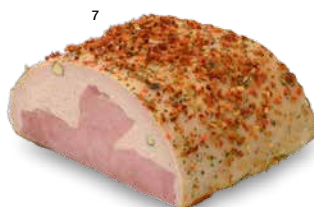
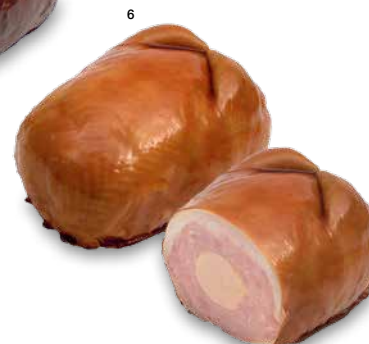
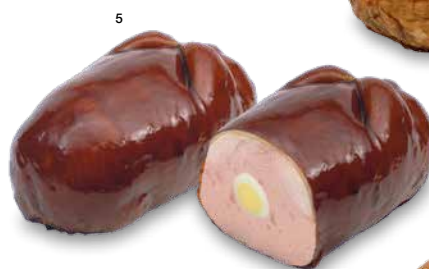
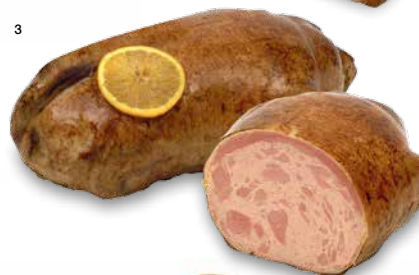


A close-up photograph of a hand garnishing a charcuterie plate. The plate features a thick slice of cured meat, possibly prosciutto, topped with a fresh herb sprig. Surrounding the meat are slices of watermelon, a lemon wedge, and small purple flowers. The background is softly blurred, showing a glass and another dish. The entire scene is framed by a white border.

*Cuit's*  
CHARCUTERÍA

**SELECT**CHARCUTERIE

SELECT CHARCUTERIE AND SPECIALITIES



# Specialities

## 1. PHEASANT STUFFED WITH FOIE GRAS

| \*Net weight: 2 kg  
Ref. 333103

## 2. TURKEY STUFFED WITH MUSHROOMS AND MEDALLION OF FOIE GRAS | \*Net weight: 4 kg Ref. 333104

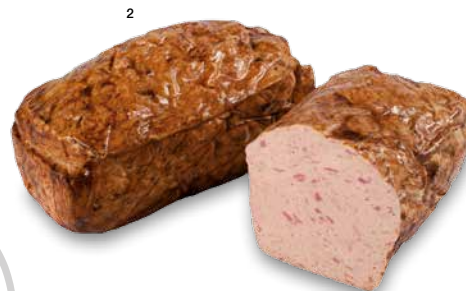
## 3. DUCK WITH ORANGE | \*Net weight: 3kg Ref. 333102

## 4. STUFFED CHICKEN "BRASÉ" | \*Net weight: 2,5 kg Ref. 333206

## 5. POULTRY "ON THE NEST" | \*Net weight: 2,5 kg Ref. 333203

## 6. SUPREME OF POULARDA WITH MEDALLION OF FOIE | \*Net weight: 2,5 kg Ref. 333205

## 7. PORK LOIN PAUPIETTE | \*Net weight: 2,3 kg Ref. 333302



## Exclusive cold meats

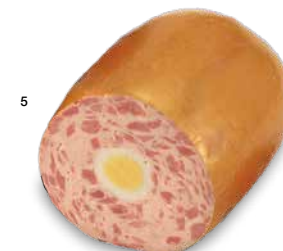
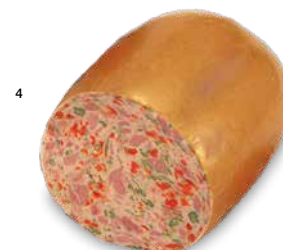
1. MOULDED PORK | \*Net weight: 3 kg  
Ref. 333802

2. PLUM CAKE OF ROAST MEAT | \*Net weight: 2 kg  
Ref. 333811

3. MOULDED DUCK | \*Net weight: 2,5 kg  
Ref. 333803

4. GALANTINE "JARDINIERE" | \*Net weight: 2,5 kg  
Ref. 333402

5. EGG GALANTINE | \*Net weight: 2,5 kg  
Ref. 333403





Pol. Ind. Ctra. Riudellots, 13  
17244 Cassà de la Selva (Girona) SPAIN  
Tel. (34) 972 46 15 84

[www.cuits.com](http://www.cuits.com) ·  "Alégrate la vida cuit's"